

An *Ex Vivo* Porcine Spleen Perfusion as a Model of Bacterial Sepsis

Supplementary Data

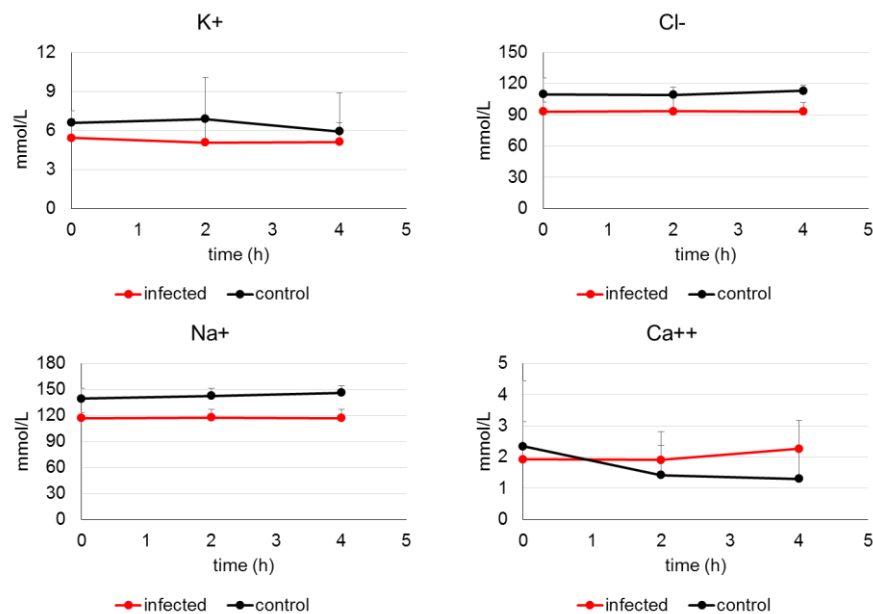


Fig. S1: Blood electrolytes values

Blood parameters were measured to exclude the occurrence of acidosis resulting from the formation of ischemic areas and necrosis. Electrolyte values are reported for the infected (red line, n=4) and uninfected blood samples (black line, n=3), and they remained stable in both the conditions tested. Error bars indicate standard deviation.

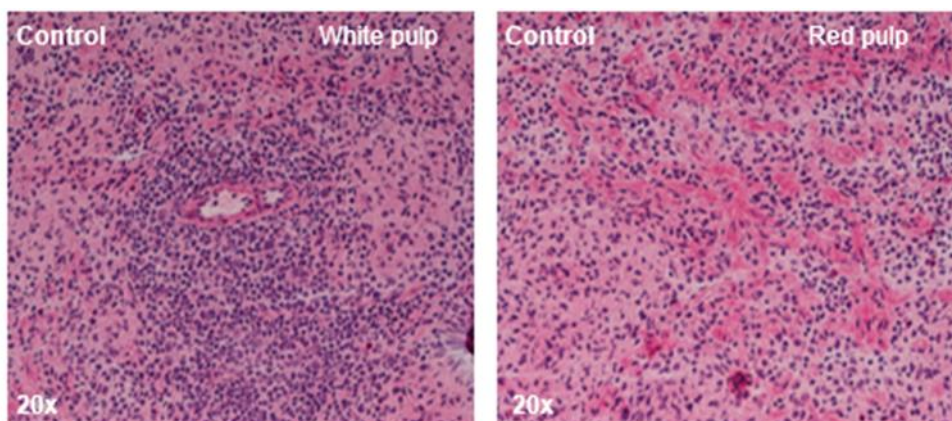


Fig. S2: Histology of perfused spleen

Hematoxylin and eosin staining was performed on 10 μ m tissue sections from uninfected perfused spleen. The white pulp is shown in the left panel and the red pulp in the right panel.