

Tigges et al.:

Academic Application of Good Cell Culture Practice for Induced Pluripotent Stem Cells

Supplementary Data

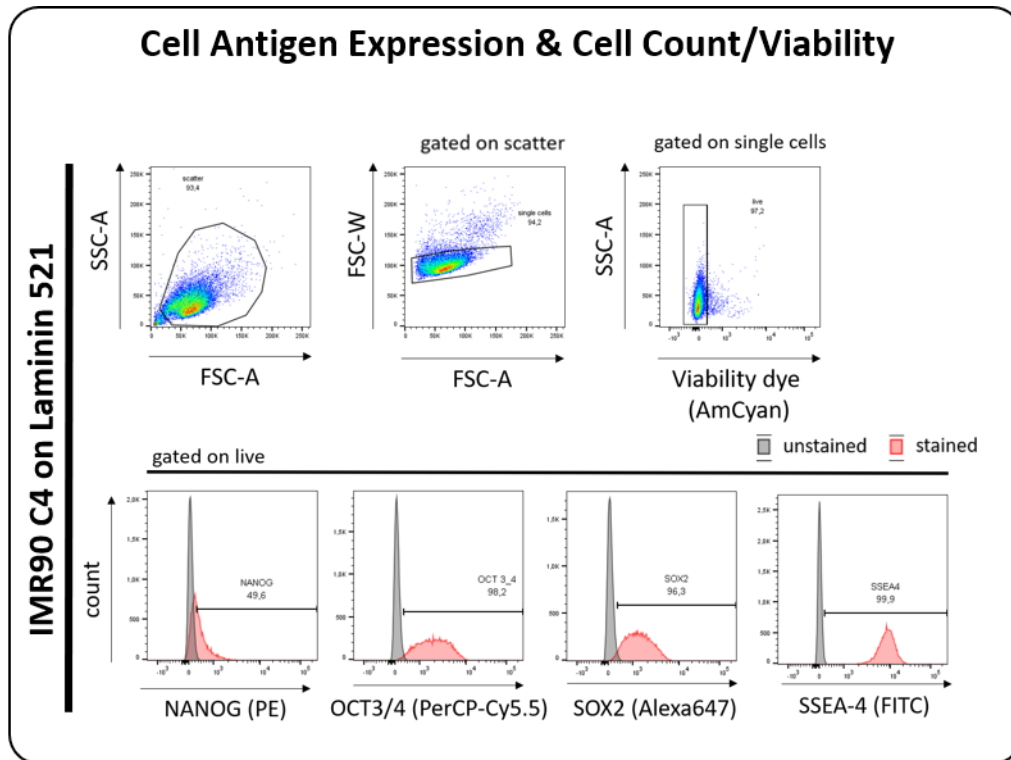


Fig. S1: Results of cell antigen expression (assay 5) depend on the matrix used

Cells of the IMR90-C4 MCB were kept on laminin (LN) 521 in iPS-Brew medium. Cell antigen expression assessed by multipanel flow cytometric analysis for the stem cell markers NANOG-PE, OCT3/4-PerCP-Cy5.5, SOX2-Alexa Fluor 647, and SSEA-4-FITC (assay 5.1) plus fixable viability stain 510 (AmCyan; assay 5.2) as live/dead discriminator. Acquisition and analysis were performed on a BD FACSCanto™ II system using BD FACS Diva Software Version 6.1.3. Analysis was performed using Flow Jo V10.7.1.