

ALTEX

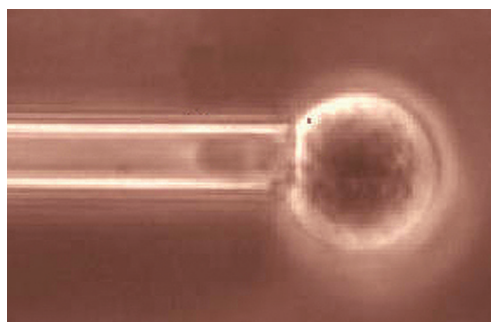
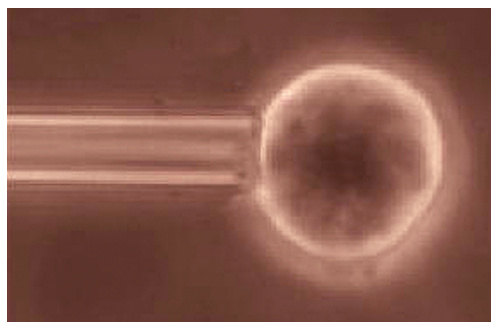
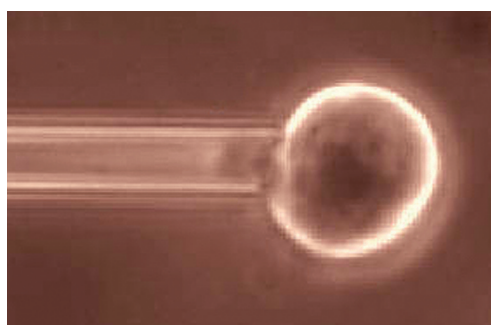
ALTERNATIVES TO ANIMAL EXPERIMENTATION

Costanza Rovida:
**Food for thought ...
why no new *in vitro* tests
will be done for REACH
by registrants**

Melanie Hamann, Nikola
Lange, Jagoda Kuschka and
Angelika Richter:
**Non-invasive genotyping
of transgenic mice:
comparison of different
commercial kits and
required amounts**

Vera Kerleta, Isabella Andrlik,
Susanne Braunmüller,
Thomas Franke, Michael Wirth
and Franz Gabor:
**Poloxamer 188
supplemented culture
medium increases the
vitality of Caco-2 cells
after subcultivation and
freeze/thaw cycles**

News
Conference report
Calendar of events
Imprint



Highlights of WC7 – part 2

William S. Stokes and
Marilyn Wind:
**Validation of innovative
technologies and
strategies for regulatory
safety assessment
methods: challenges and
opportunities**

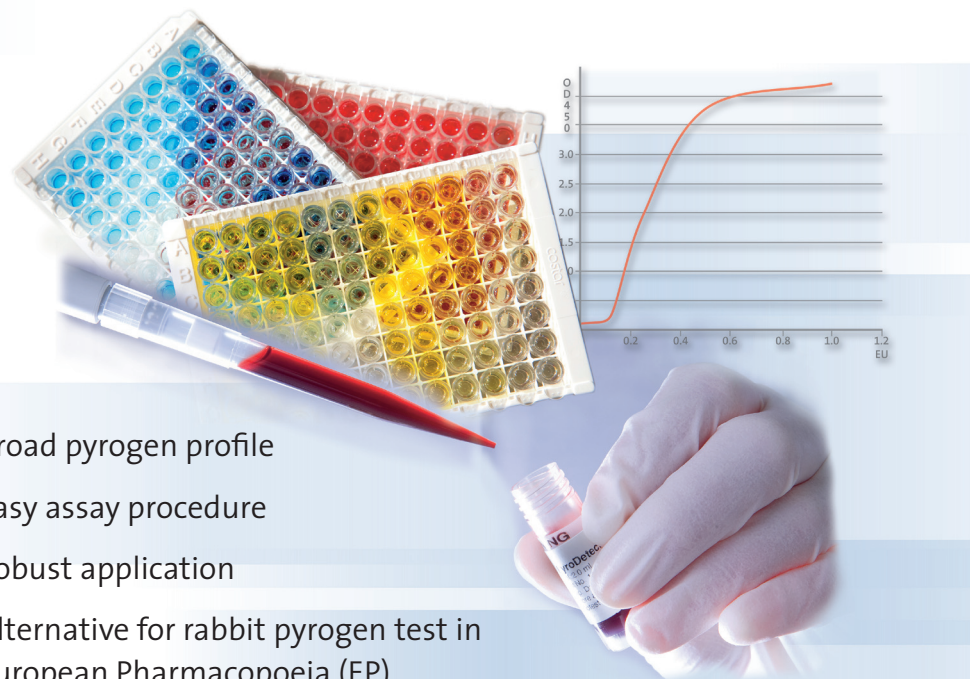
Carl Westmoreland,
Paul Carmichael, Matt Dent,
Julia Fentem, Cameron MacKay,
Gavin Maxwell, Camilla Pease
and Fiona Reynolds:
**Assuring safety without
animal testing:
Unilever's ongoing
research programme to
deliver novel ways to
assure consumer safety**

Bennard van Ravenzwaay:
**Initiatives to decrease
redundancy in animal
testing of pesticides**

New

PyroDetect System

The Human(e) Alternative in Pyrogen Testing



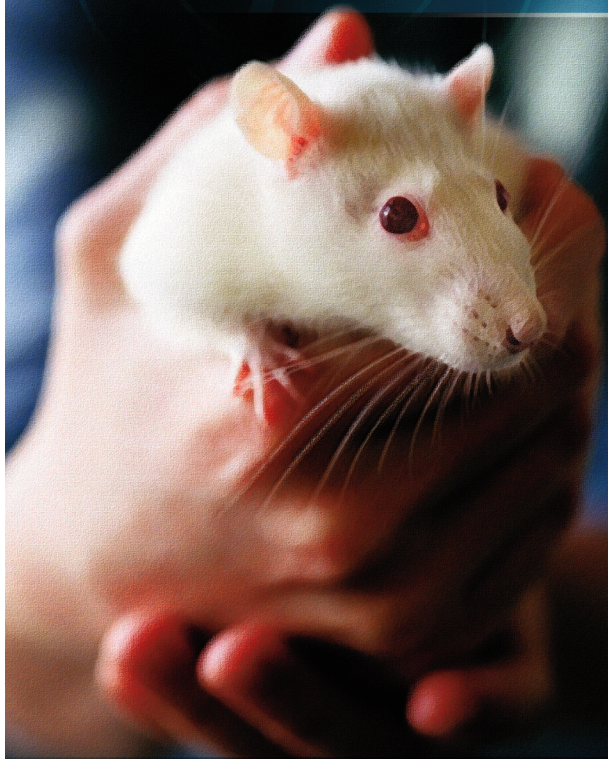
- Broad pyrogen profile
- Easy assay procedure
- Robust application
- Alternative for rabbit pyrogen test in European Pharmacopoeia (EP)

The PyroDetect System is an innovative test based on the Monocyte-Activation Test (MAT) for the easy and robust detection of a broad range of pyrogens. The PyroDetect System mimics the human immune response fever reaction using cryo-preserved human whole blood. Monocytes present in preparations from human whole blood respond to pyrogens by producing Interleukin- 1β detected in an ELISA procedure.

PyroDetect – a revolutionary system for efficient pyrogen testing

Biotest AG Technology Center Microbiology • Wernher-von-Braun-Straße 9 • 69214 Eppelheim • Germany
Tel.: +49 (0)6221 726 5130 • Fax: +49 (0)6221 726 5139 • Sales: +49 (0)6103 801 496 • www.biotest.com • hycon@biotest.de

8th World Congress on Alternatives & Animal Use in the Life Sciences



Replacement • Reduction • Refinement

Hosted by the
Canadian Council on Animal Care

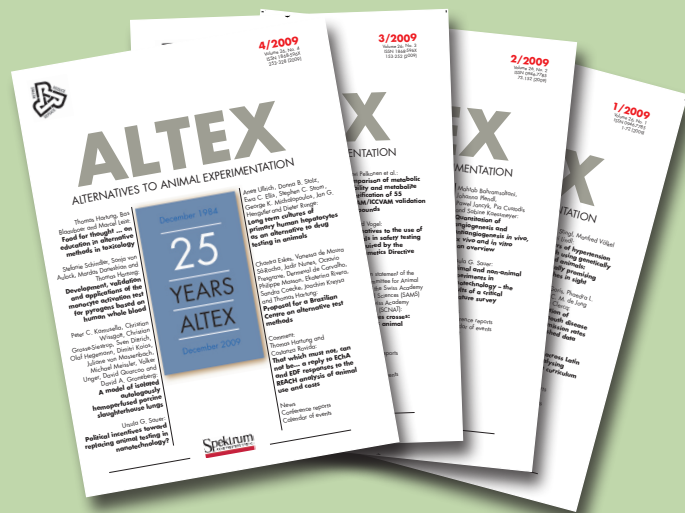
August 21–25, 2011
Montréal, Canada



www.ccac.ca

ALTEX – Reduced Subscription Rates

Special Reduced Rates for Selected Scientific Societies and Animal Welfare Organizations



EU

Subscription service Europe:

ALTEX Edition, Weinmannsgasse 86,

8700 Kuesnacht ZH, Switzerland

Tel.: +41-44-380 0830, Fax: +41-44-380 0832,

e-mail: subs@altex.ch.

USA

Subscription service USA:

Center for Alternatives to Animal Testing (CAAT),

615 N. Wolfe St. W7032, Baltimore, MD, 21205, USA.

Phone: 410-614-4990, Fax: 410-614-2871,

e-mail: caat@jhsph.edu.

INDIA

Subscription service India:

Mahatma Gandhi Doerenkamp Center (MGDC) for

Alternatives to Use of Animals in Life Science Education,

Bharathidasan University, Tiruchirappalli - 620 024, India.

Phone: +91 9790995854, Fax: +91 431 2407045,

e-mail: mgdcau@yahoo.in

First name

Last name

Institute/Library
(if applicable)

Address

State

Zip code

Country

e-mail address

Date/signature

Four issues:

☐ Standard subscription

\$ 120 / 80 €

☐ Library

\$ 240 / 160 € (companies, institutes, libraries)

☐ Student

\$ 62 / 42 € (please fax proof of student status)

☐ Society members

\$ 62 / 42 € (members of selected scientific societies and animal welfare organizations, please ask)

☐ Subscription in India

Please ask for special prices for a subscription in India

Prices include postage for USA, all European countries and India. Additional costs for shipment outside of USA, Europe and India: 20 €.

ALTEX will be printed in India starting 2010, there will be special prices and shipping costs in India.

The subscription can be cancelled at the end of the year. If there is no cancellation the subscription will be renewed automatically for another year.

I want to pay by

☐ credit card

☐ check

☐ electronic bank transfer

☐ please send me an invoice

Please copy, insert your data and fax to the above given fax numbers in USA, EU or India

Selected contents of ALTEX are available online:
<http://altweb.jhsph.edu/altex> and www.altex.ch